

CC Technical Documentation
RM-11 Series Transceivers

Troubleshooting – FM Radio

Contents

Page

Troubleshooting - FM Radio..... 3
FM Radio Testing with Pop-Port™ Connector Headset3
FM Radio Testing with UHJ Headset4

Troubleshooting - FM Radio

The FM radio circuits are located on the bottom of the PWB, near the Pop-port™ connector.

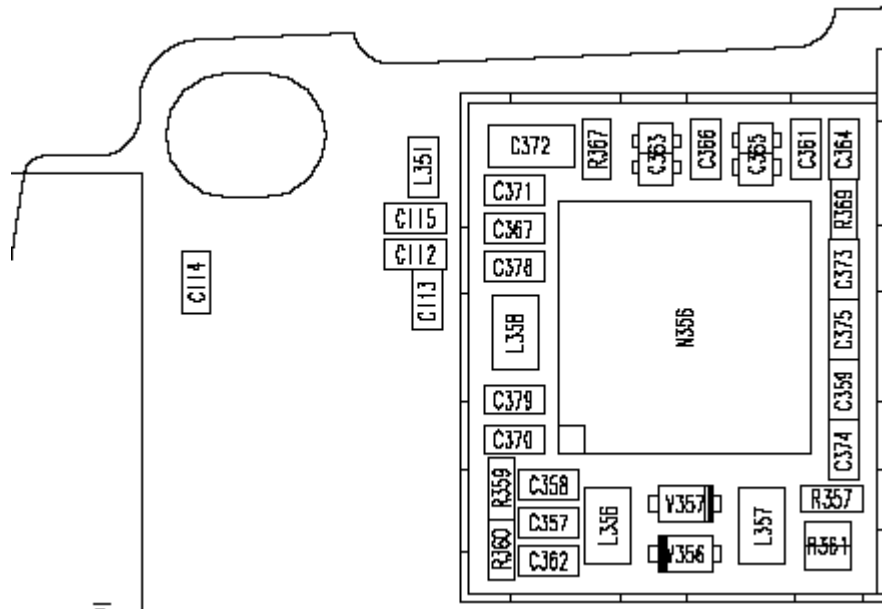


Figure 1: FM radio circuits

FM Radio Testing with Pop-Port™ Connector Headset

1. Connect the Pop-Port™ connector headset (HDS-3) to the Pop-Port™ connector (bottom connector).
2. Select "Radio" from the phone's User Interface Menu control.
3. Set a local radio station by selecting "Automatic Tuning" from the Radio Menu and pressing the UP arrow.
4. Listen for sound out of the Pop-Port™ connector headset.
 - If there is a signal present, continue with step 1 in the next section, "FM Radio Testing with UHJ Headset".
 - If there is no static or sound present, inspect all the FM radio circuits on the bottom PWB layer and refer to the *Troubleshooting - Baseband* section of this manual on audio amplifier troubleshooting.

FM Radio Testing with UHJ Headset

1. Disconnect the Pop-Port™ connector headset (HDS-3) from the Pop-Port™ connector and connect the UHJ headset.
2. Select the "Radio" menu from the phone's User Interface Menu control.
3. Set a local station by selecting "Automatic Tuning" from the Radio menu and then pressing the Up arrow.
4. Listen for sound out of the headset.
 - If there is a signal present, the radio is functioning properly.
 - If there is no static or sound present, then inspect the FM radio, Baseband circuits, and audio circuits. Consult the *Troubleshooting - Baseband* section of this manual for audio troubleshooting.

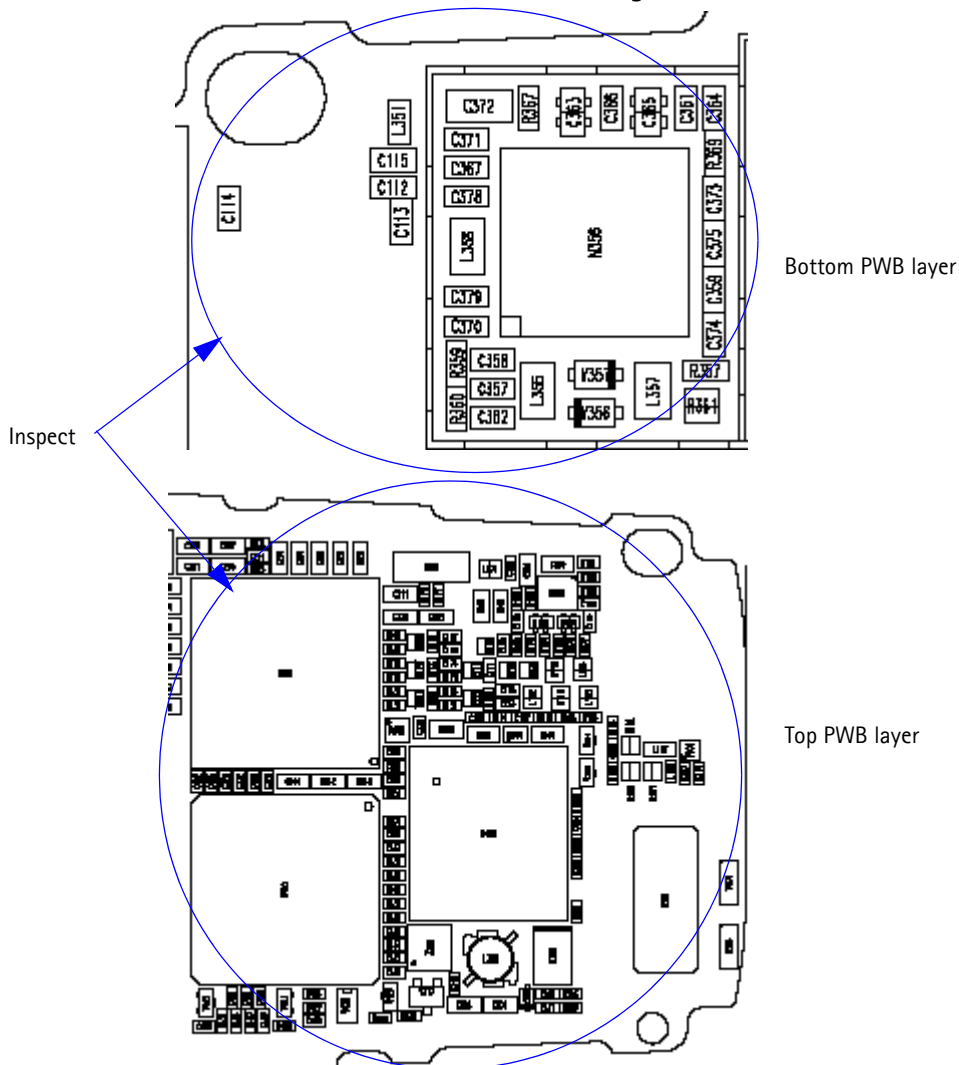


Figure 2: Bottom and top PWB layer inspection areas